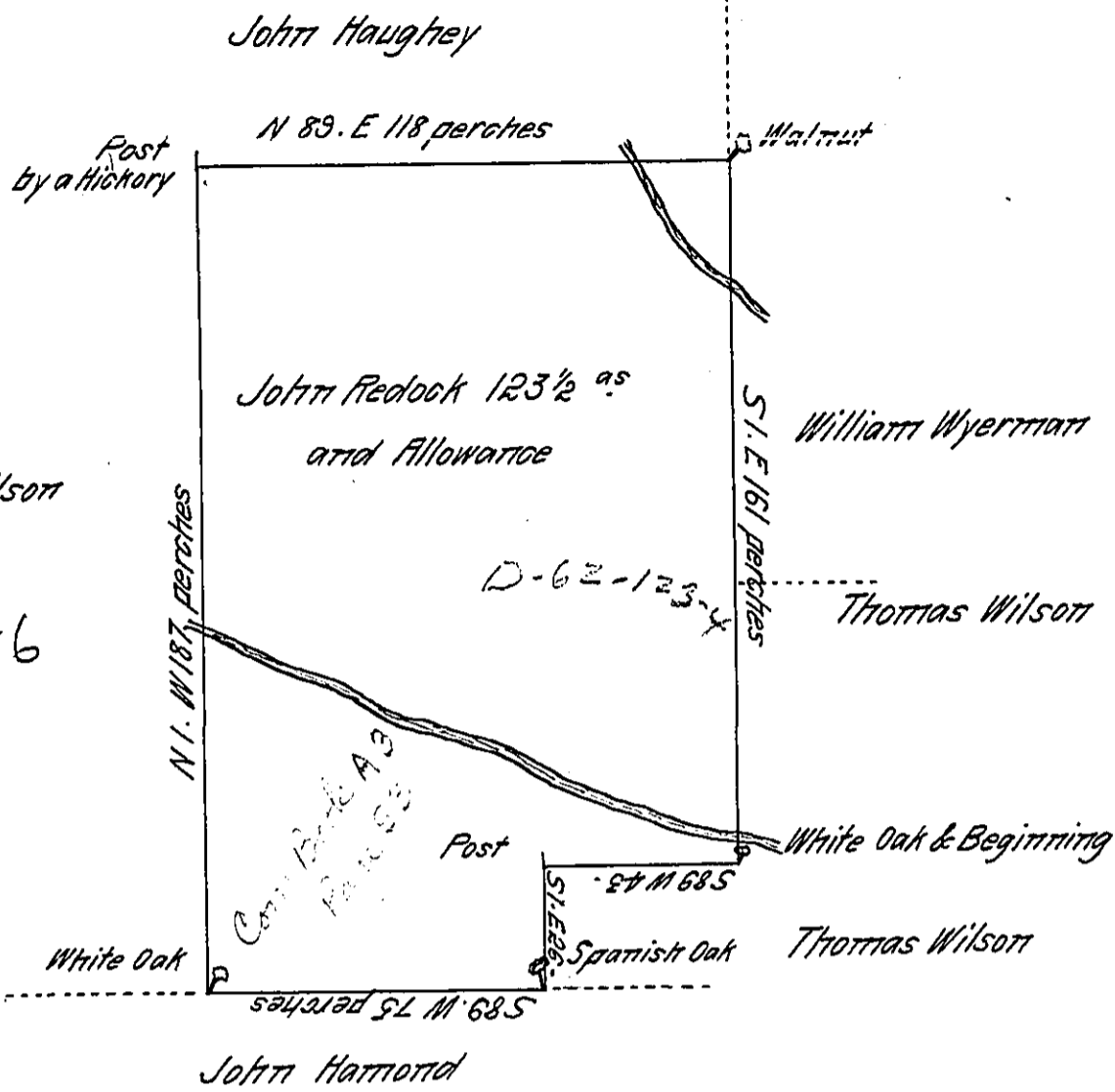


C 78-284



D-62123

A Draught of a Tract of Land Situate in Mettallen Township in the County of York late (part of the County of Lancaster) containing one Hundred and twenty three Acres and an half and the Allowance of Six Acres Per Cent for Roads and Highways Surveyed the 26<sup>th</sup> day of October 1743 by Thomas Cookson Esquire late Deputy Surveyor of Lancaster County for John Redlock in pursuance of a Warrant bearing Date at Philadelphia the 10<sup>th</sup> Day of December 1741.

The Lines examined Protracted and Calculated  
To W<sup>m</sup> Parsons Esq<sup>r</sup>. S.G.

P Geo. Stevenson one of the  
Exec<sup>rs</sup> of Tho<sup>s</sup> Cookson Deced.

IN TESTIMONY that the above is a copy of the original remaining on file in the Department of Internal Affairs of Pennsylvania, made conformably to an Act of Assembly approved the 16th day of February, 1833, I have hereunto set my Hand and caused the Seal of said Department to be affixed at Harrisburg, this first day of December 1910

*Henry Horner*  
Secretary of Internal Affairs.